



Millstream House

The Stones, Castleton

Hope Valley, S33 8WX



MILLSTREAM HOUSE, CASTLETON

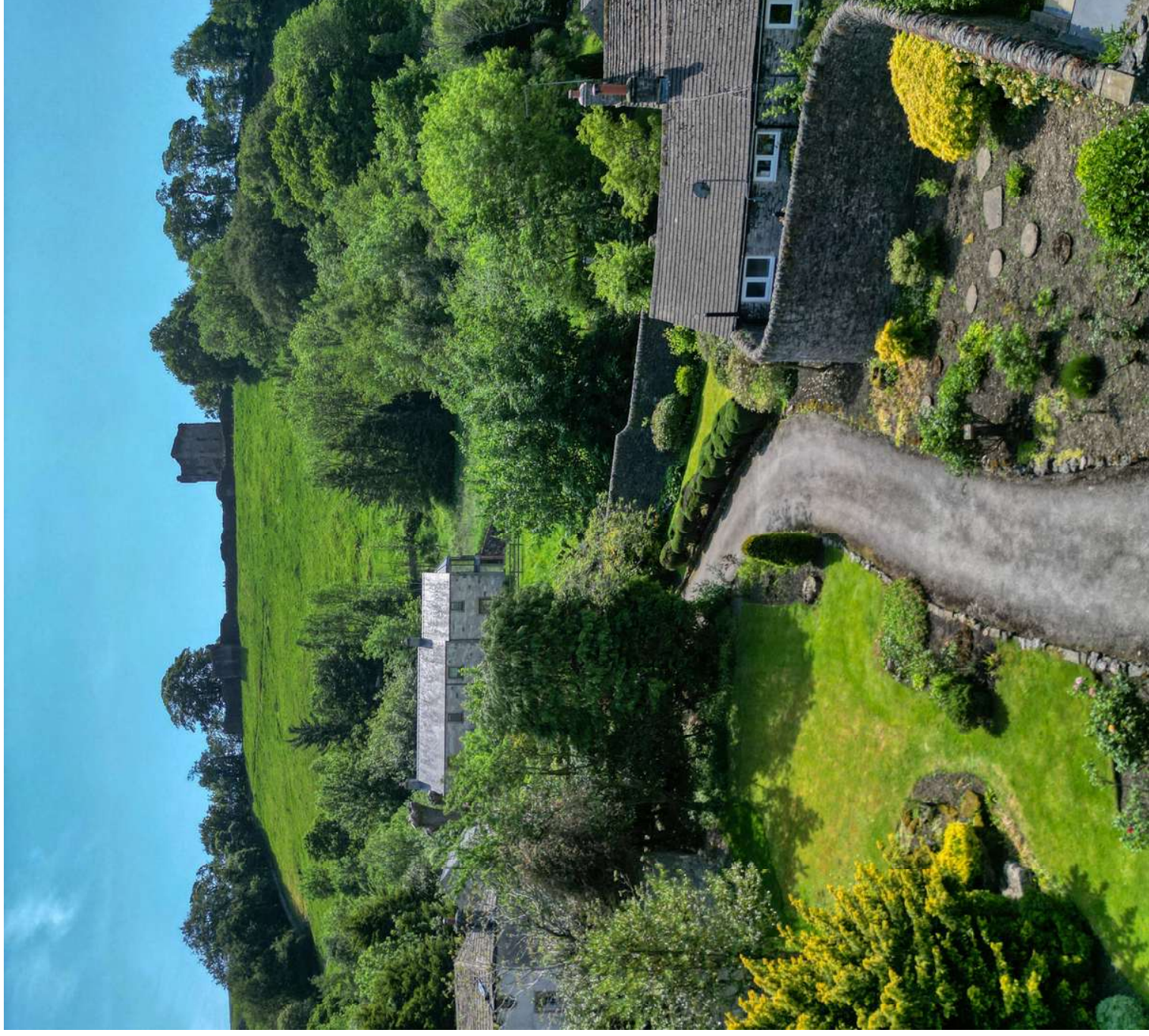
A rare opportunity to acquire a beautifully appointed character residence occupying a private, peaceful and picturesque setting in the heart of Castleton, one of the Peak District's most sought-after villages. Set behind high stone walled gardens and approached via a gated entrance, Millstream is a truly unique country home offering an outstanding blend of charm, privacy and versatile living accommodation, complemented by stunning landscaped grounds.

Rich in period character and architectural detail, the property showcases exposed timber beams, natural stonework, oak-framed glazing and a collection of elegant reception spaces designed equally for relaxed family living and entertaining on a grand scale. The home flows beautifully throughout, with an abundance of natural light and carefully considered interiors enhancing its warm and welcoming atmosphere.



KEY FEATURES

- Peaceful & Picturesque Private Setting
- Stunning Walled Garden With Millstream
- Views Towards The Castle
- Off Road Parking For Several Vehicles
- Spacious & Flexible Living Accommodation
- Character Features
- Popular Peak District Village With Good Amenities
- Good Commutable Links To Sheffield & Manchester



GROUND FLOOR

At the heart of the property is a superbly appointed kitchen featuring quality cabinetry, Corian work surfaces and integrated Smeg appliances, whilst a series of beautifully proportioned reception rooms provide exceptional versatility.

The formal dining room and magnificent lounge enjoy delightful garden aspects, with the lounge centred around a striking Clearview log-burning stove. Additional living spaces include a charming snug with a pellet-fuelled Italian fire, a study with adjoining wine store and a wonderful sun lounge opening onto the gardens.

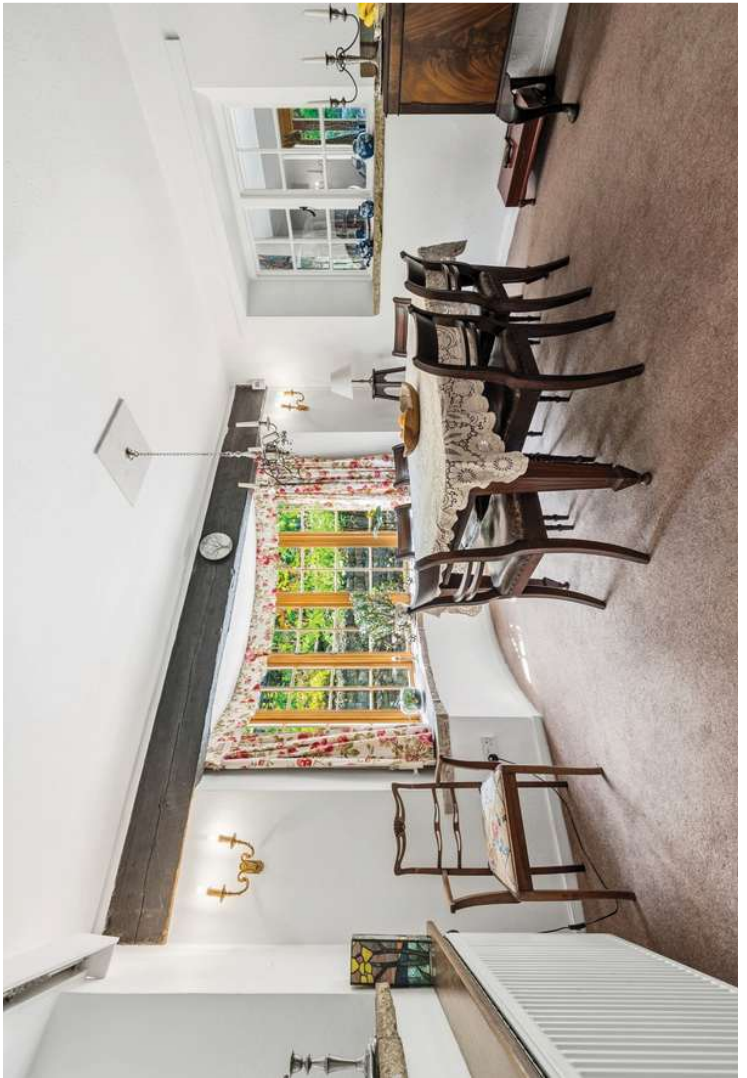
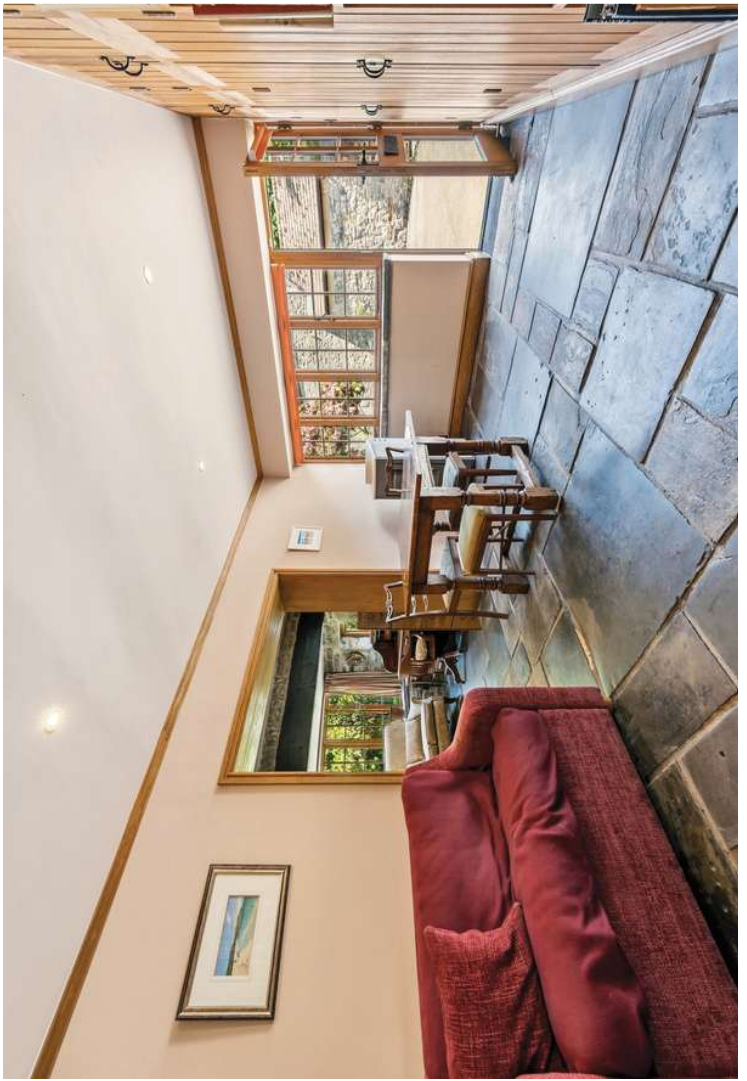
















FIRST FLOOR

To the first floor, the principal bedroom suite offers an elegant retreat complete with a luxurious en-suite bathroom.

Two further double bedrooms and a stylish family bathroom provide excellent accommodation for family and guests alike.











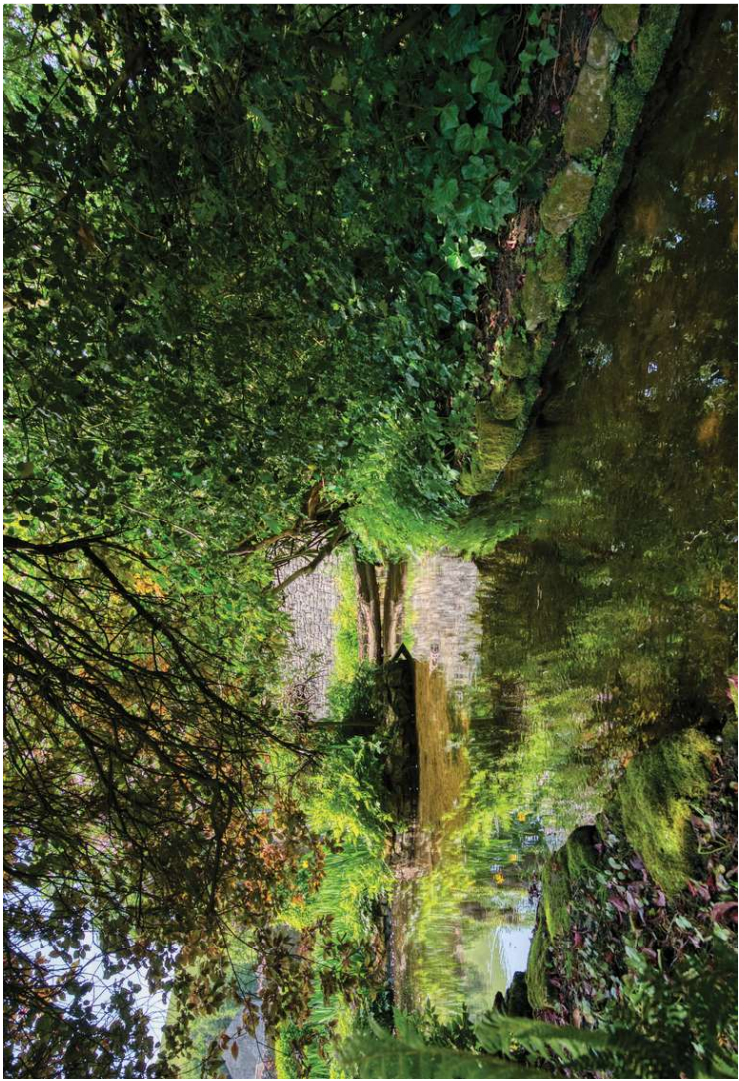
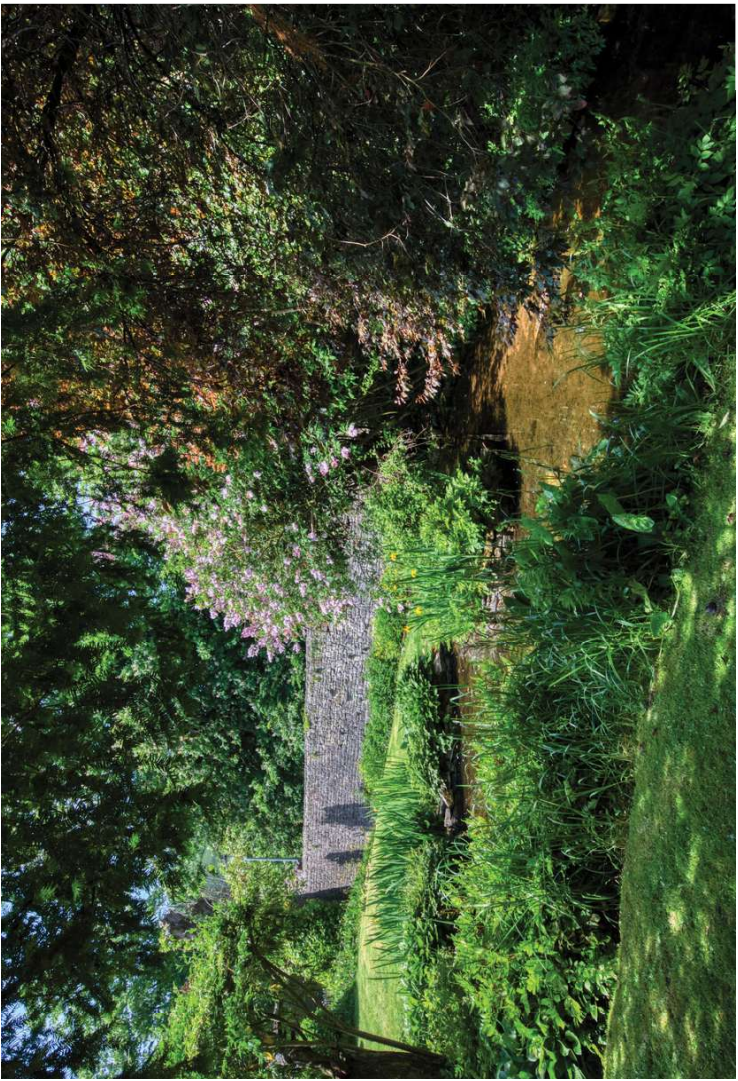
EXTERIOR

The gardens and grounds are a defining feature of Millstream and create a truly idyllic setting. Beautifully maintained lawns, mature planting, orchard areas and natural stone terraces combine to provide an exceptional outdoor environment.

A delightful natural stream runs alongside the property with a pond, island and stone bridge adding to the enchanting atmosphere. The outbuildings offer further flexibility for a variety of uses, whilst ample private parking is positioned within the grounds.

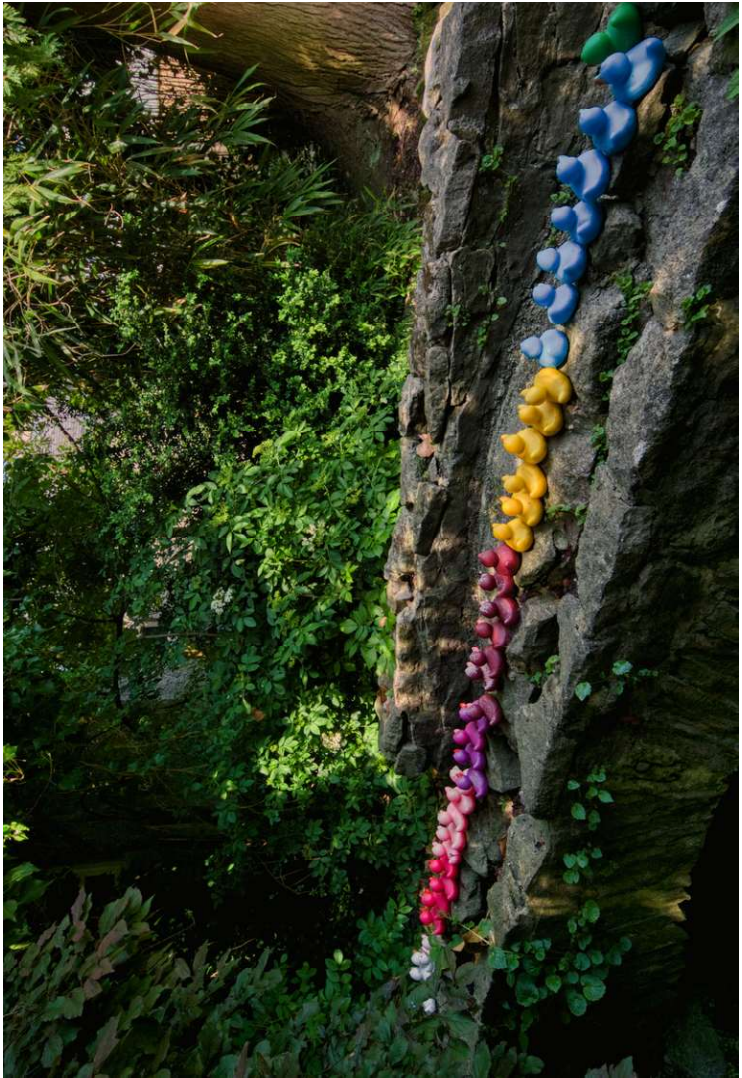
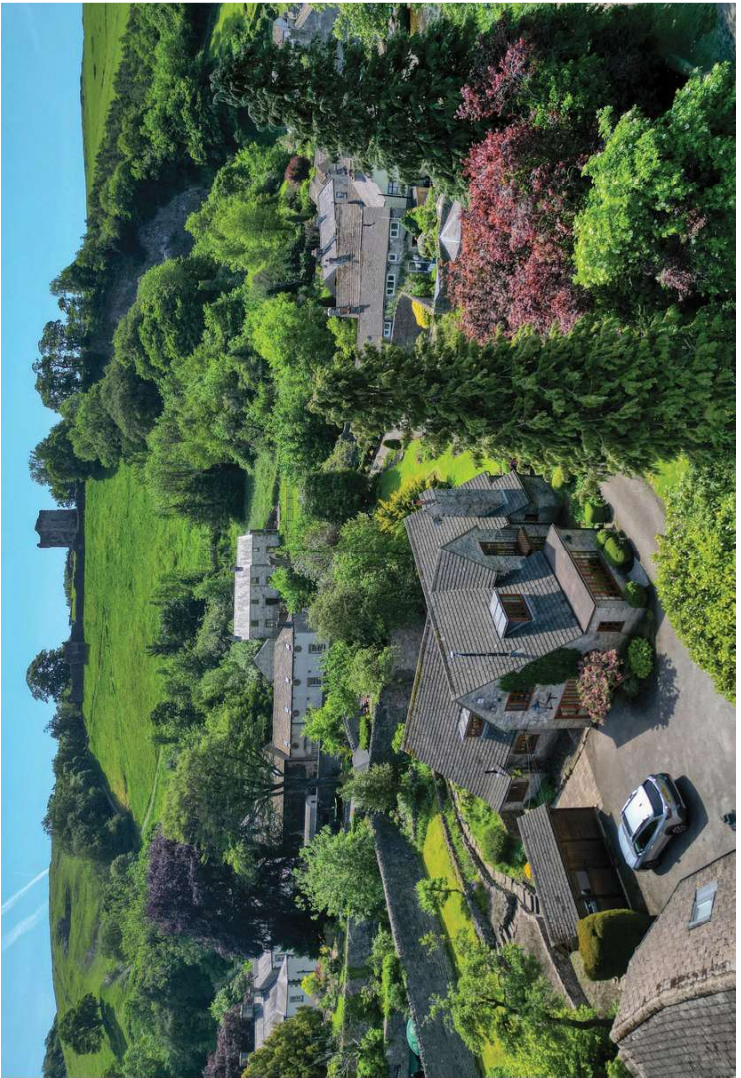
Combining timeless character with modern comforts, Millstream is an outstanding Peak District residence in an impressive setting, offering a lifestyle opportunity rarely available within Castleton.







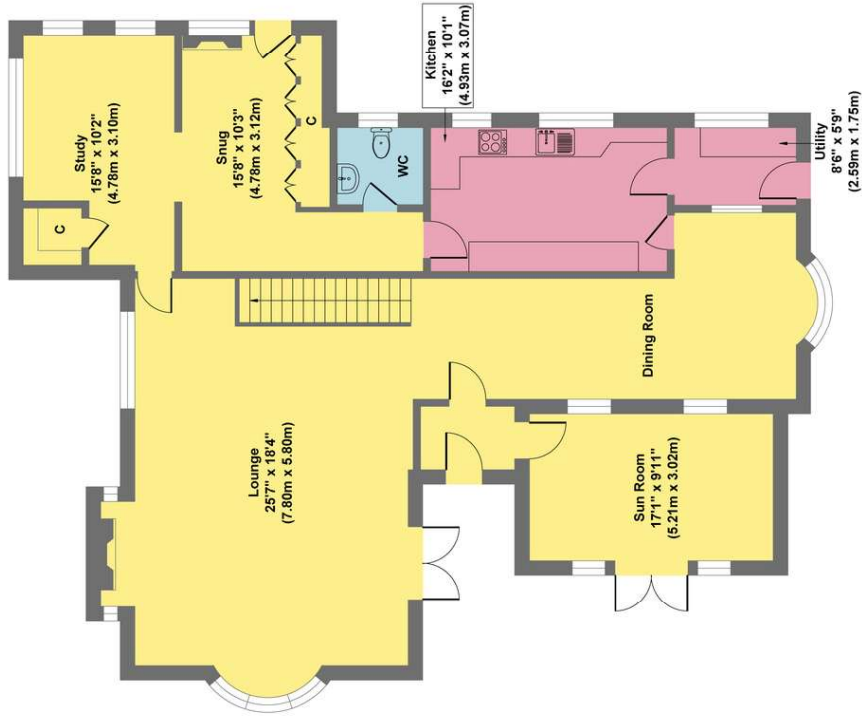




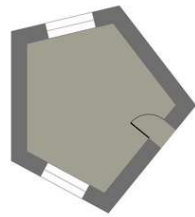




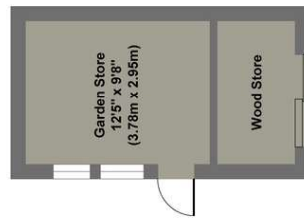
Millstream House



Ground Floor
 Approximate Floor Area
 1587 sq.ft
 (147.48 sq.m.)



Potting Shed



Outbuildings
 Approximate Floor Area
 176 sq.ft
 (16.31 sq.m.)



First Floor
 Approximate Floor Area
 1187 sq.ft
 (110.24 sq.m.)

Approx. Gross Internal Floor Area 2950 sq.ft / 274.03 sq.m

Illustration for identification purposes only. Measurements are approximate, not to scale



For further information please
telephone Hathersage on 01433 650009
or email

or Jill Reeves - jill.reeves@saxtonmee.co.uk

While we endeavour to make our sales particulars fair, accurate and reliable, they are only a general guide to the property and, accordingly, if there is any point, which is of particular importance to you, please contact the relevant office. SERVICES: The Agents have not tested any apparatus, equipment, fittings or services and so cannot verify they are in working order. The buyer is advised to obtain verification. MEASUREMENTS: Please note all the measurement details are approximate and should not be relied upon as exact. FLOORPLANS; Plans are for guidance purposes only and under no circumstances should they be relied upon for use in planning carpets and other such fixtures, fittings or furnishings.